

Liberia Ebola SitRep no. 69

Ministry of Health and Social Welfare

July 22, 2014

Cases

	National	Bomi County	Bong County	Grand Kru	Lofa County	Margibi County	Maryland County	Montserrado County	Nimba County	River Gee County	RiverCess County	Sinoe County
New Cases												
New Case/s (Suspected)	2	0	1	0	0	0	0	2	0	0	0	0
New Case/s (Probable)	13	0	1	0	10	0	0	3	0	0	0	0
New case/s (confirmed)	2	0	1	0	0	1	0	0	0	0	0	0
Total suspected cases	80	0	9	0	52	0	0	19	1	0	0	0
Total probable cases	81	1	6	0	38	2	0	34	1	0	0	0
Total confirmed cases	77	1	7	0	41	2	0	25	2	0	0	0
Total Number of Conformed Cases of Sierra Leonean Nationality	11	0	0	0	11	0	0	0	0	0	0	0
Total Number of Conformed Cases of Guinean Nationality	0	0	0	0	0	0	0	0	0	0	0	0
Cumulative (confirmed, probable, suspected) cases	238	2	22	0	131	4	0	78	4	0	0	0

Cases among HCWs

	National	Bomi County	Bong County	Grand Kru	Lofa County	Margibi County	Maryland County	Montserrado County	Nimba County	River Gee County	RiverCess County	Sinoe County
Newly Reported Cases in HCW on 22th July 2014	0	0	0	0	0	0	0	0	0	0	0	0
Cumulative cases among HCW	28	0	15	0	6	0	0	7	0	0	0	0
Newly Reported deaths in HCW on 22th July 2014	0	0	0	0	0	0	0	0	0	0	0	0
Cumulative deaths among HCW	10	0	0	0	4	0	0	6	0	0	0	0

Isolation and Discharges

	National	Bomi County	Bong County	Grand Kru	Lofa County	Margibi County	Maryland County	Montserrado County	Nimba County	River Gee County	RiverCess County	Sinoe County
New admissions on 22th July 2014	11	0	0	0	10	0	0	1	0	0	0	0
Total no. currently in Treatment Units	24	0	0	0	15	0	0	9	0	0	0	0
Total discharges on 22th July 2014	0	0	0	0	0	0	0	0	0	0	0	0
Cumulative admission/isolation	24	0	0	0	15	0	0	9	0	0	0	0

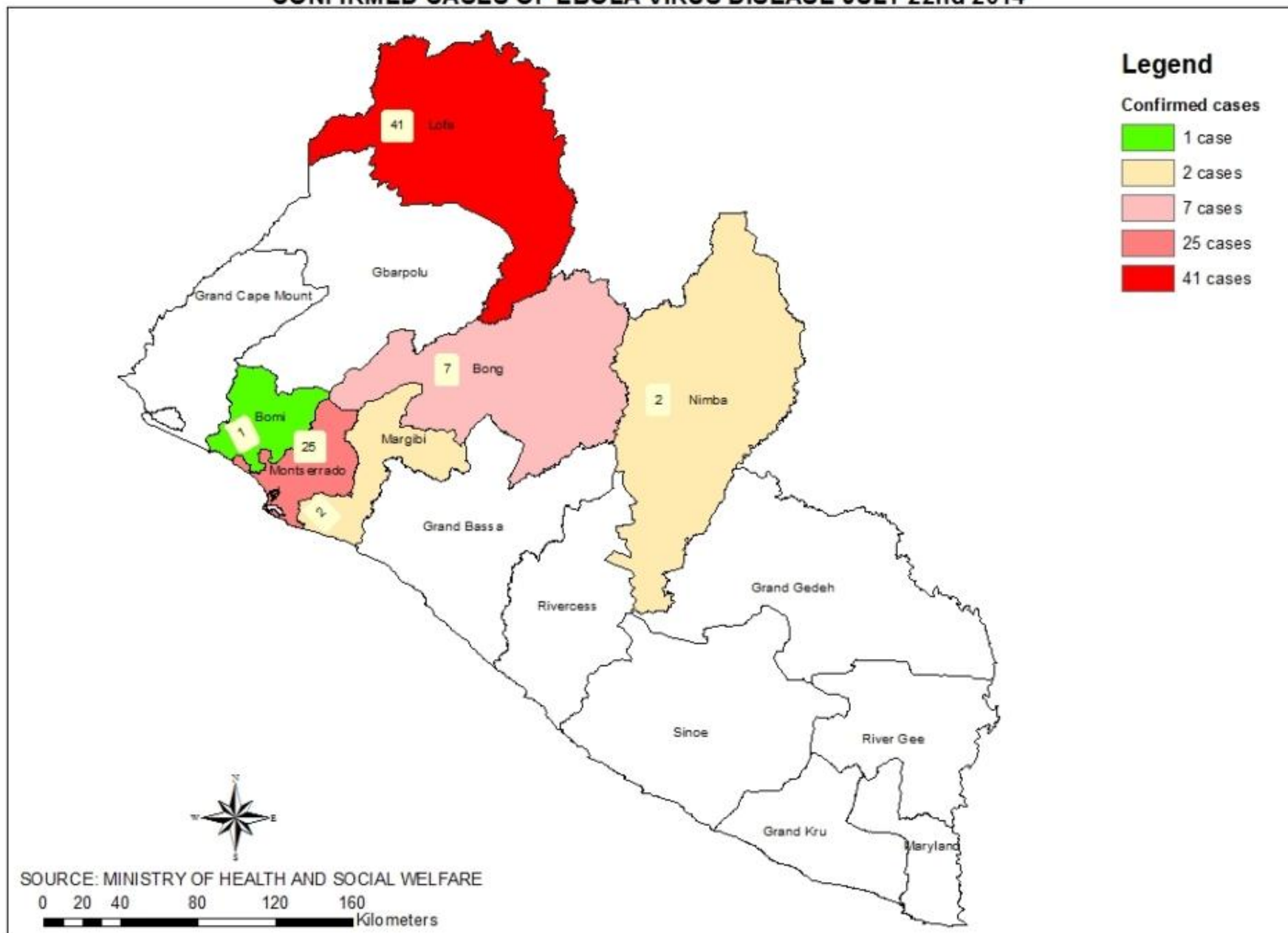
Deaths

	National	Bomi County	Bong County	Grand Kru	Lofa County	Margibi County	Maryland County	Montserrado County	Nimba County	River Gee County	RiverCess County	Sinoe County
Newly reported deaths 22th July 2014	5	0	0	0	1	0	0	4	0	0	0	0
Total death/s in confirmed cases	54	1	0	0	30	2	0	21	0	0	0	0
Total death/s in probable cases	47	1	1	0	15	0	0	30	0	0	0	0
Total death/s in suspected cases	16	0	1	0	14	0	0	1	0	0	0	0
Total death/s in confirmed, probable, suspected cases	117	2	2	0	59	2	0	52	0	0	0	0
Case Fatality Rate (CFR) - Confirmed & Probable Cases	63.9	100.0	9.1	0.0	57.0	50.0	0.0	86.4	0.0	0.0	0.0	0.0

Ebola Disease Outbreak (March 22-July 22, 2014)

	National	Bomi County	Bong County	Grand Kru	Lofa County	Margibi County	Maryland County	Montserrado County	Nimba County	River Gee County	RiverCess County	Sinoe County
Total Case/s (Suspected)	81	0	9	0	52	0	0	19	1	0	0	0
Total Case/s (Probable)	84	1	6	0	40	2	0	34	1	0	0	0
Total case/s (confirmed)	84	1	7	0	45	4	0	25	2	0	0	0
Cumulative (confirmed, probable, suspected) cases	249	2	22	0	137	6	0	78	4	0	0	0
Health Care Workers												
Cumulative cases among HCW	31	0	16	0	8	0	0	7	0	0	0	0
Cumulative deaths among HCW	12	0	0	0	6	0	0	6	0	0	0	0
Deaths												
Total death/s in confirmed cases	60	1	0	0	34	4	0	21	0	0	0	0
Total death/s in probable cases	50	1	2	0	17	0	0	30	0	0	0	0
Total death/s in suspected cases	19	0	1	0	15	1	0	2	0	0	0	0
Total death/s in confirmed, probable, suspected cases	129	2	3	0	66	5	0	53	0	0	0	0
Cumulative CFR (March 22 - July 22, 2014)	65.5	100	15.3 8	#### #	60.0	66.7	#### #	86.4	0	#### #	#### #	#### #

CONFIRMED CASES OF EBOLA VIRUS DISEASE JULY 22nd 2014



DEATHS IN CONFIRMED CASES JULY 22nd 2014

Legend

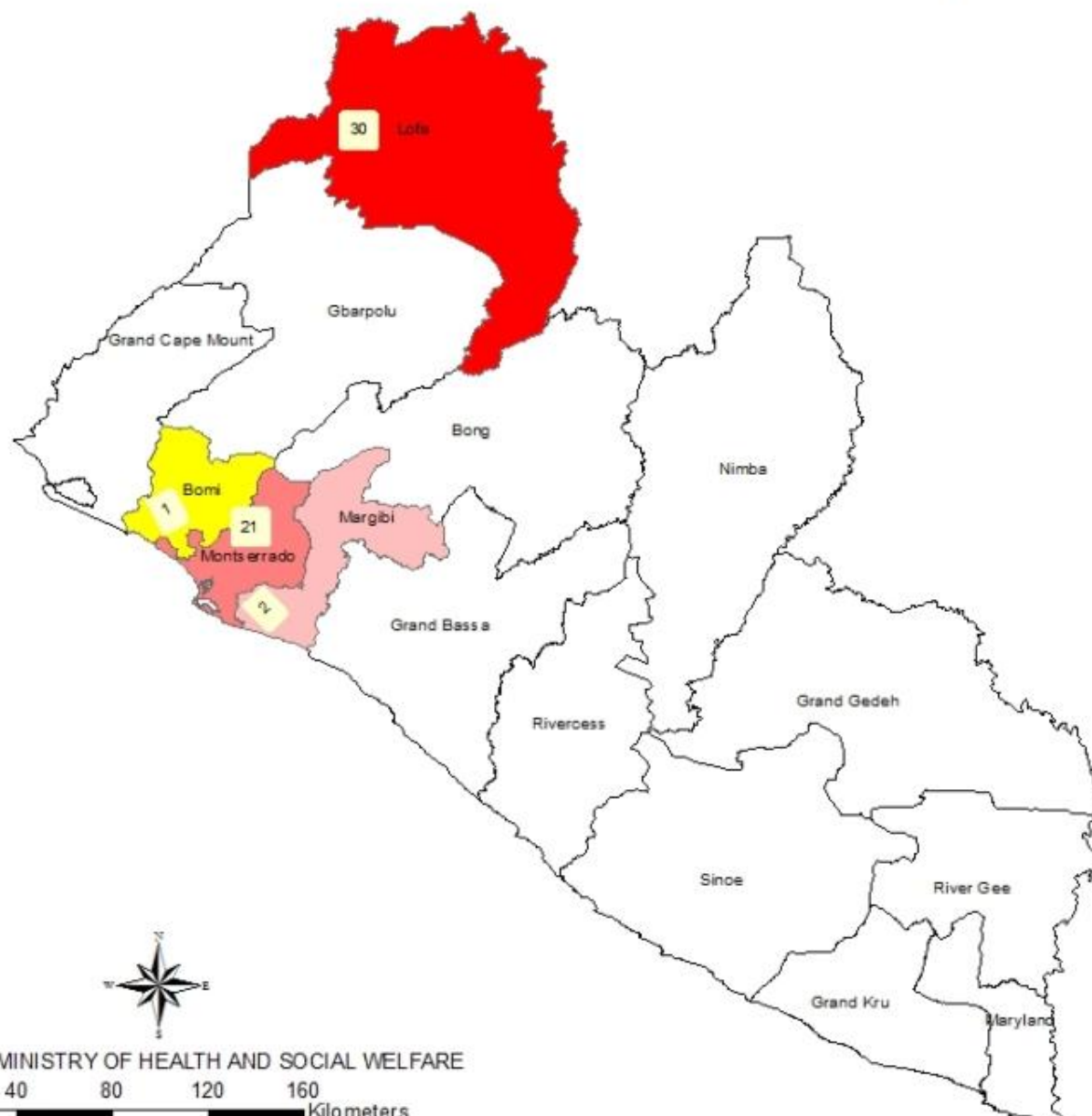
Deaths in confirmed cases

1 death

2 deaths

21 deaths

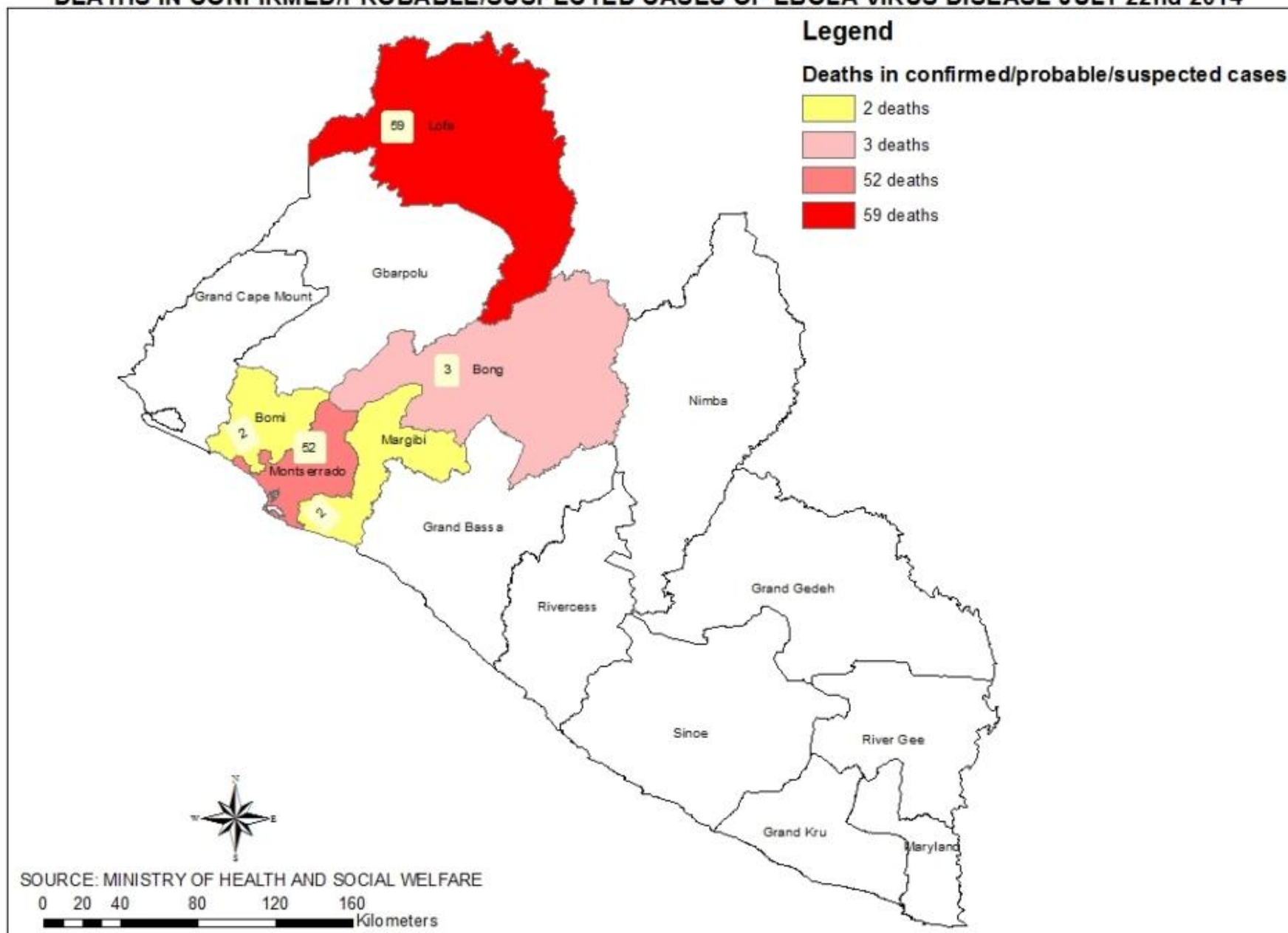
30 deaths



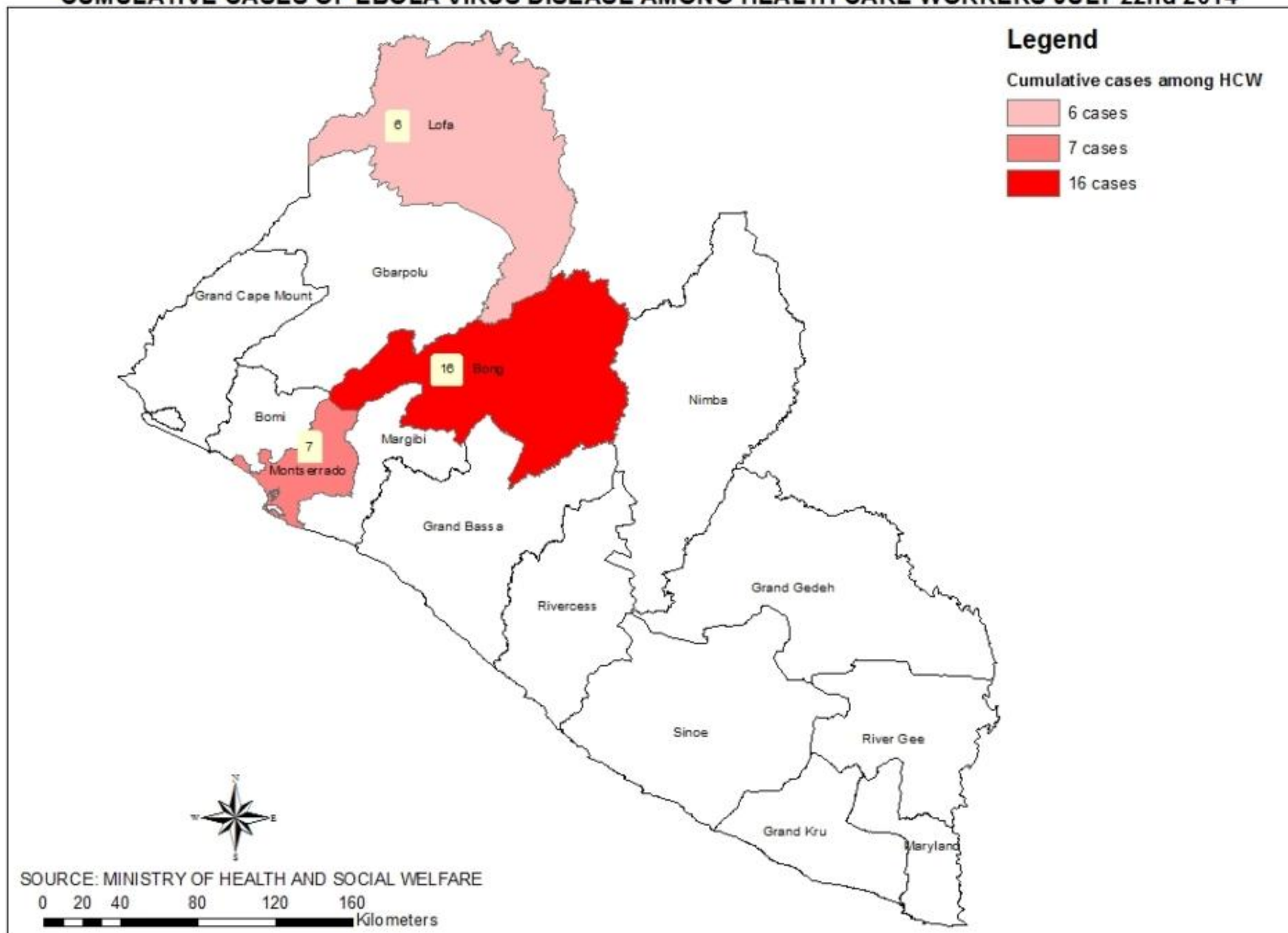
SOURCE: MINISTRY OF HEALTH AND SOCIAL WELFARE

0 20 40 80 120 160 Kilometers

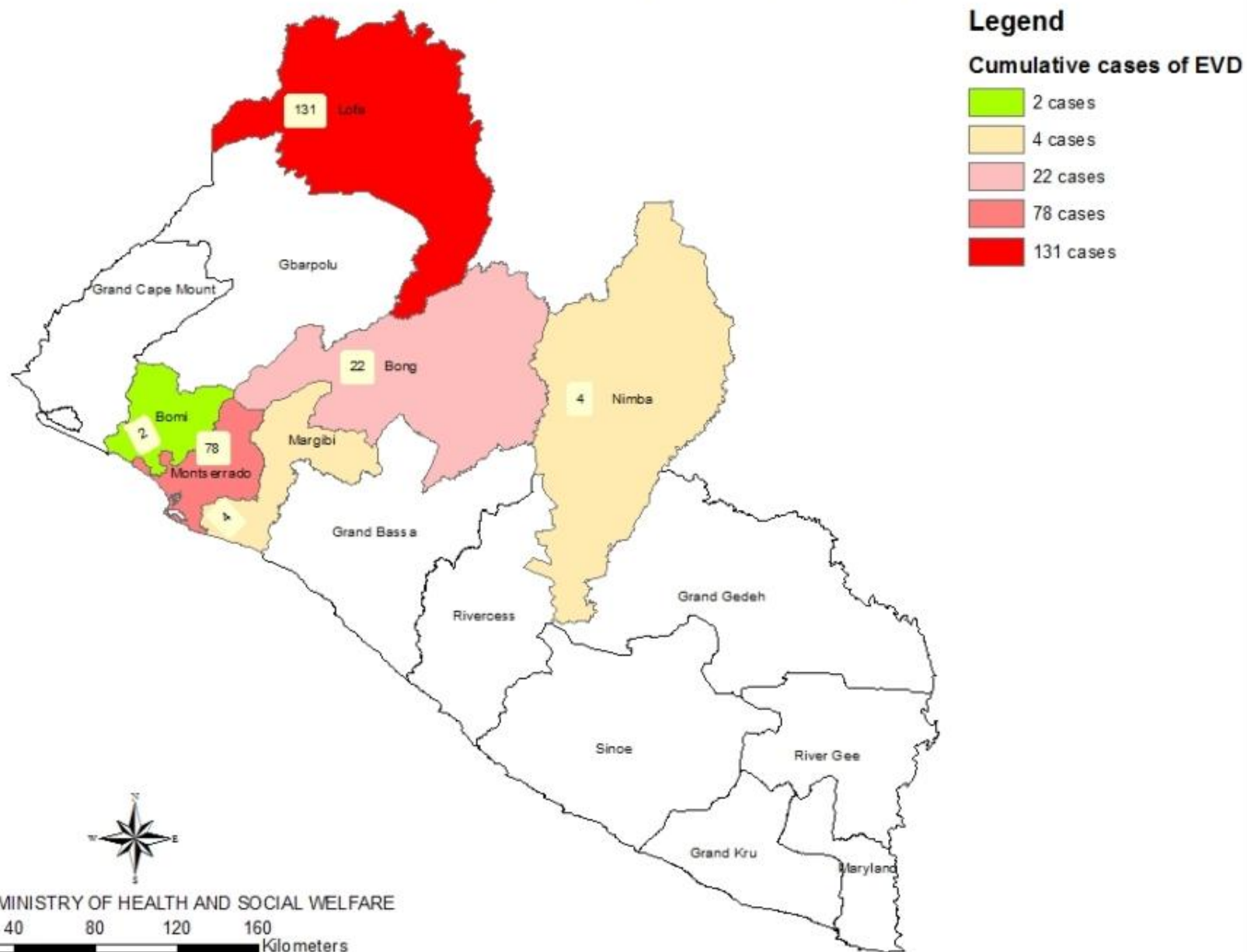
DEATHS IN CONFIRMED/PROBABLE/SUSPECTED CASES OF EBOLA VIRUS DISEASE JULY 22nd 2014



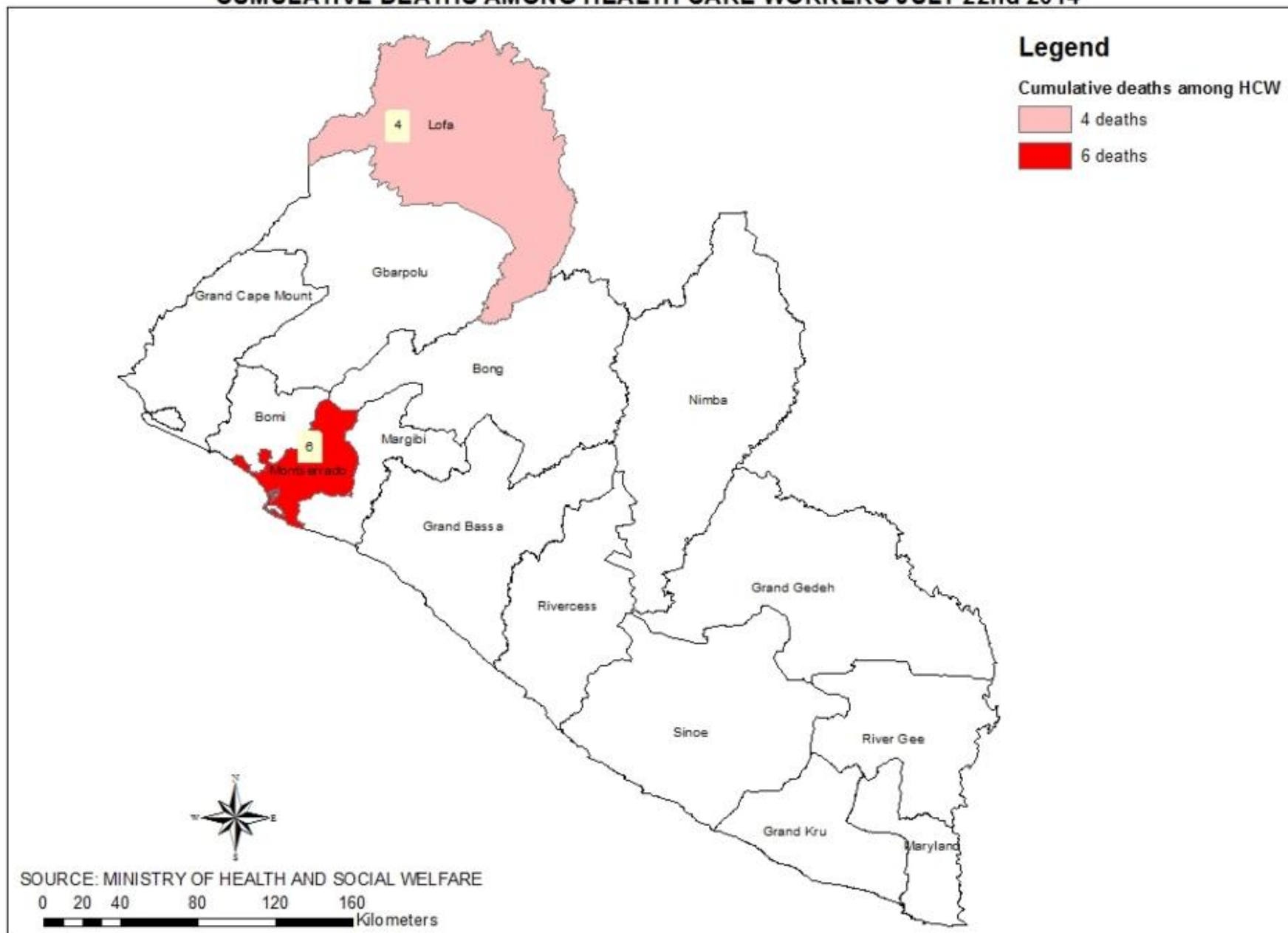
CUMULATIVE CASES OF EBOLA VIRUS DISEASE AMONG HEALTH CARE WORKERS JULY 22nd 2014



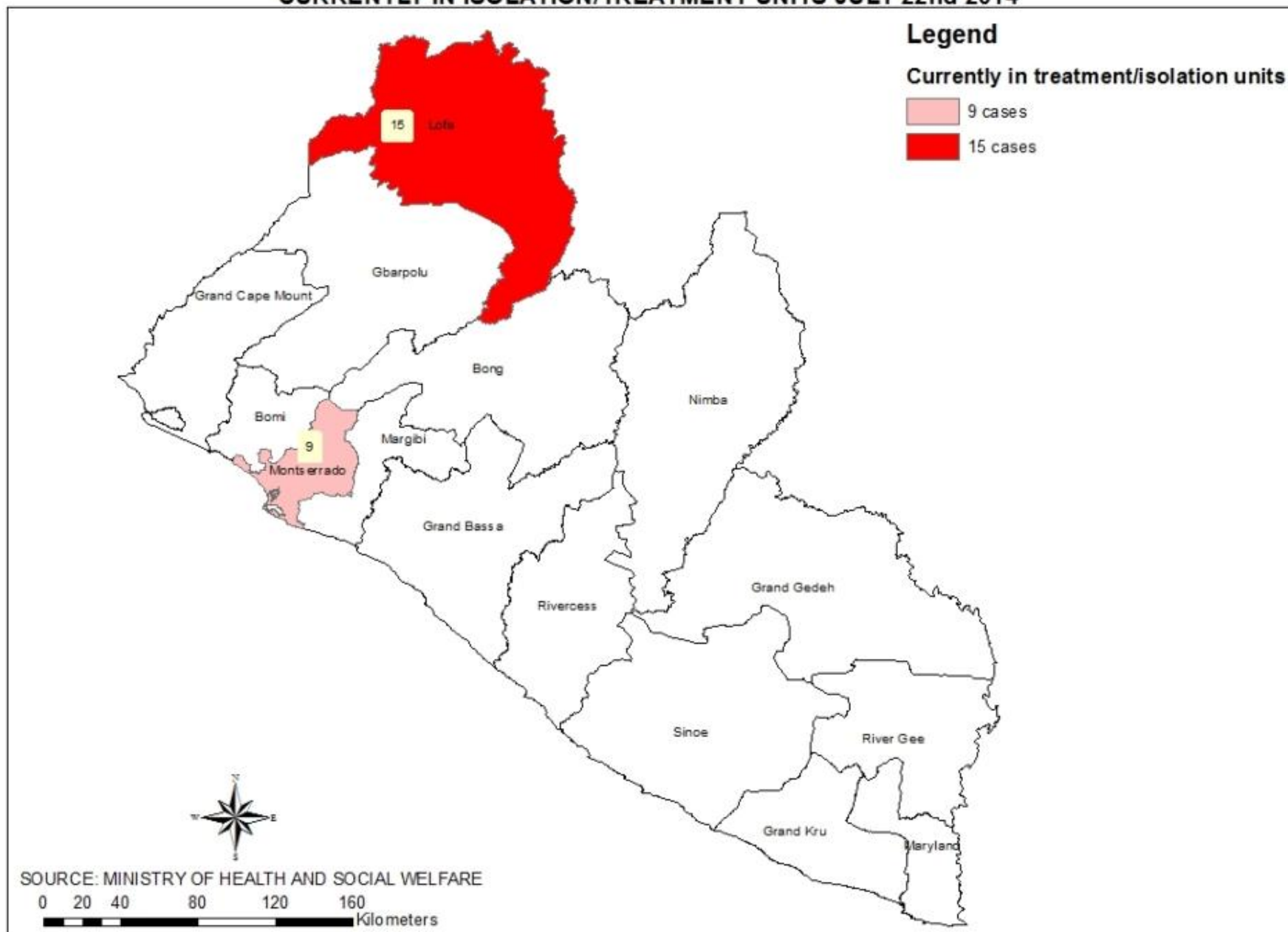
CUMULATIVE CASES OF EBOLA VIRUS DISEASE JULY 22nd 2014



CUMULATIVE DEATHS AMONG HEALTH CARE WORKERS JULY 22nd 2014



CURRENTLY IN ISOLATION/TREATMENT UNITS JULY 22nd 2014



Highlights

- 10 new probable cases from Lakpaba Town, Lofa County. All sent to ETU in Foya
- 1 confirmed case from Dolo's Town, Margibi County
- Search continues for missing probable case in Zorzor

Bong Highlights

- BCHSWT carried out awareness targeting the Churches' Association in Gbarnga and the citizens of Suakoko
- Abandon street body disposed of by County Health Team burial and disposal team.
- Bong County Health Team in collaboration with Save the Children begins public Ebola video documentary today
- RBHS county training supports team arrived in county and begins facility based training in Salala, Sanoyea, Suakoko, Jorquelleh, Panta Kpaai and Kokoyah districts
- Massive gathering of Commissioners, Local Chiefs and Bong County citizens plan for Ebola sensitization planned for Monday July 28, 2014

Bong Highlights

Issues

- Stock out of chlorine in county
- Myth and disbelief in many quarters still pose challenges to the combat against Ebola
- No funding for Ebola effort and county initiatives
- Need for clear line communication between Central ministry and Counties

Constraints

- High cost of regular transportation of specimen and supplies from Monrovia to Bong
- Just one vehicle (ambulance) for Ebola Response in the county
- Delays in getting confirm case(s) to ETU in Monrovia